

## Yamada Bulletin

No. 2014-10

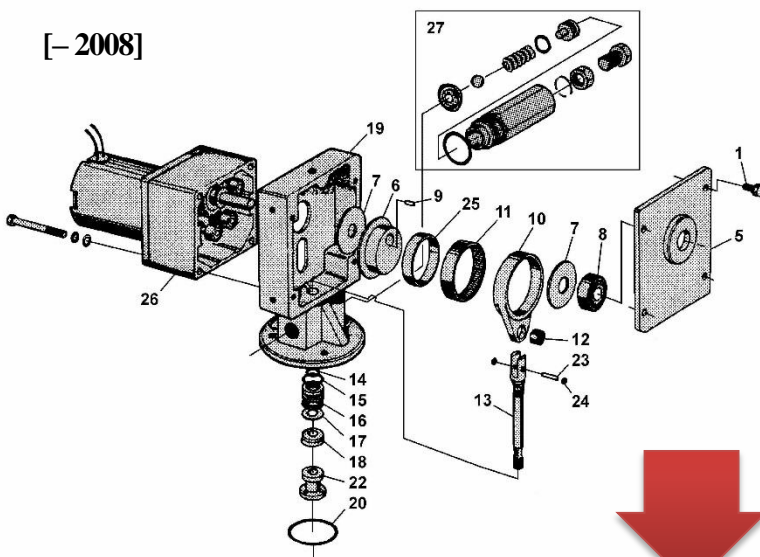
### KPL-24 and KPL-100/240 DESIGN CHANGE HISTORY

#### Overview

Summarizing history of design change of KPL-24 (DC24V), EPL-100 (AC100V) and EPL-240 (AC240V) Electric Driven Grease Lubricators

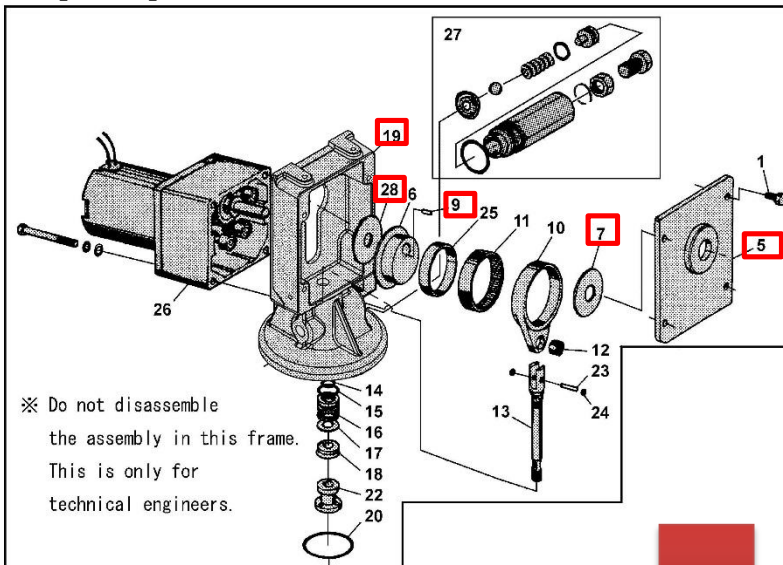
History – 851835 Pump Assy (KPL-24), 852902 Pump Assy (EPL-100) and 854027 Pump Assy (EPL-240)

[– 2008]



No.	KPL-24	Qty	EPL-100/240	Qty	Description	Remark
	Part No.		Part No.			
5	831615	1	832190	1	COVER ASSY	
6	710807	1	713231	1	CAM	
7	710805	2	713230	2	STOPPER	
8	682993	1	684337	1	BALL BEARING	
9	710806	1	713229	1	KEY	
10	710811	1	713240	1	RING	
12	682996	2	684347	2	BALL BEARING	
13	831660	1	832192	1	CONNECTING ROD	
19	710810	1	710810	1	CRANK CASE	
26	683039	1	684336 / 686944	1	MOTOR ASSY	

[2008 –]



No.	KPL-24	Qty	EPL-100/240	Qty	Description	Remark
	Part No.		Part No.			
5	832932	1	832933	1	COVER ASSY	Changed
6	710807	1	713231	1	CAM	
7	710805	1	713230	1	STOPPER	Qty changed
8	-----	--	-----	--	-----	Removed
9	716028	1	716029	1	KEY	Changed
10	710811	1	713240	1	RING	
12	682996	2	684347	2	BALL BEARING	
13	831660	1	832192	1	CONNECTING ROD	
19	715988	1	715988	1	CRANK CASE	Changed
26	683039	1	684336 / 685944	1	MOTOR ASSY	
28	716027	1	713230	1	STOPPER	Changed

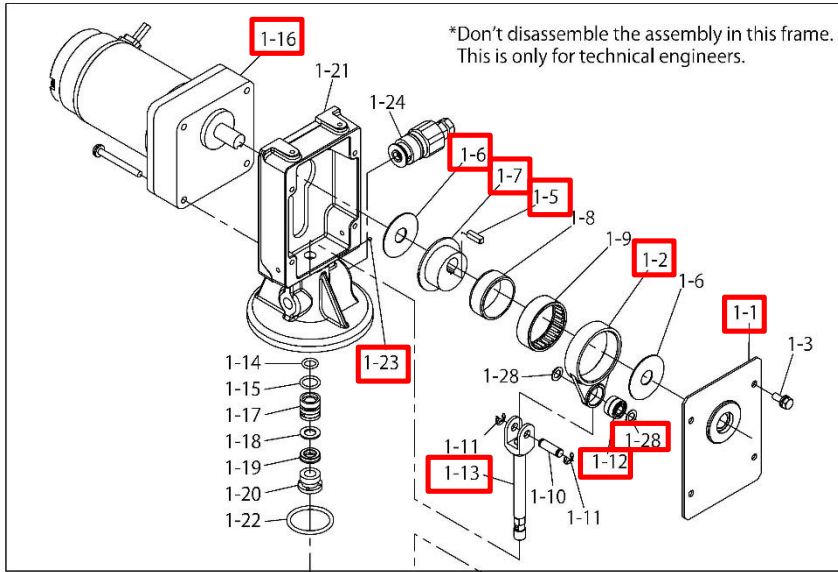
※ Do not disassemble the assembly in this frame. This is only for technical engineers.

(To be continued)

Please contact [intl@yamadacorp.co.jp](mailto:intl@yamadacorp.co.jp) for further information.

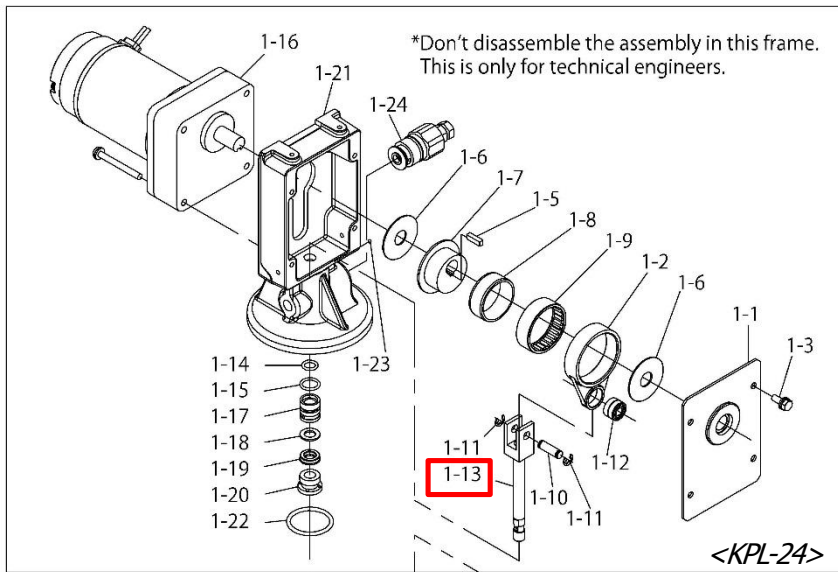
(Continued from previous page)

[2010 -]



No.	KPL-24	Qty	EPL-100/240	Qty	Description	Remark
	Part No.		Part No.			
1-1	832933	1	832933	1	COVER ASSY	Changed
1-2	713240	1	713240	1	RING	Changed
1-5	716029	1	716029	1	KEY	Changed
1-6	713230	2	713230	2	STOPPER	Changed
1-7	713231	1	713231	1	CAM	Changed
1-12	684347	2	684347	2	BALL BEARING	Changed
1-13	832192	1	832192	1	CONNECTING ROD	Changed
1-16	686381	1	684336 / 685944	1	MOTOR ASSY	Changed
1-21	715988	1	715988	1	CRANK CASE	
1-23	630310	1	630310	1	BALL	Added
1-28	713239	2	713239	2	PLAIN WASHER	Added

[2011 -]



No.	KPL-24	Qty	EPL-100/240	Qty	Description	Remark
	Part No.		Part No.			
1-1	832933	1	832933	1	COVER ASSY	
1-2	713240	1	713240	1	RING	
1-5	716029	1	716029	1	KEY	
1-6	713230	2	713230	2	STOPPER	
1-7	713231	1	713231	1	CAM	
1-12	684347	2	684347	2	BALL BEARING	
1-13	833039	1	832192	1	CONNECTING ROD	Changed
1-16	686381	1	684336 / 685944	1	MOTOR ASSY	
1-21	715988	1	715988	1	CRANK CASE	
1-23	630310	1	630310	1	BALL	
1-28	-----	--	713239	2	PLAIN WASHER	Removed

Please contact [intl@yamadacorp.co.jp](mailto:intl@yamadacorp.co.jp) for further information.

YAMADA CORPORATION